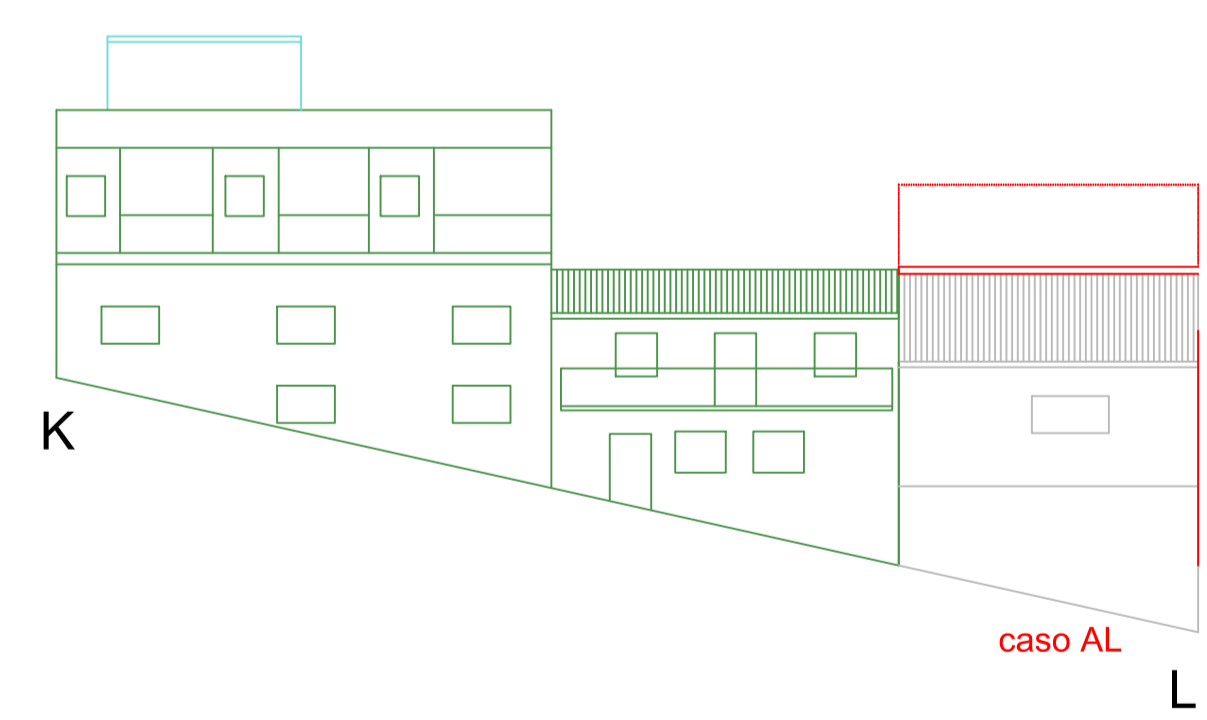
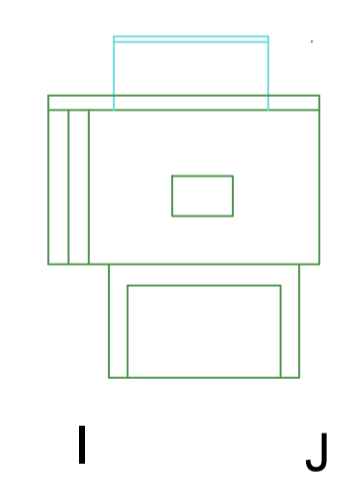
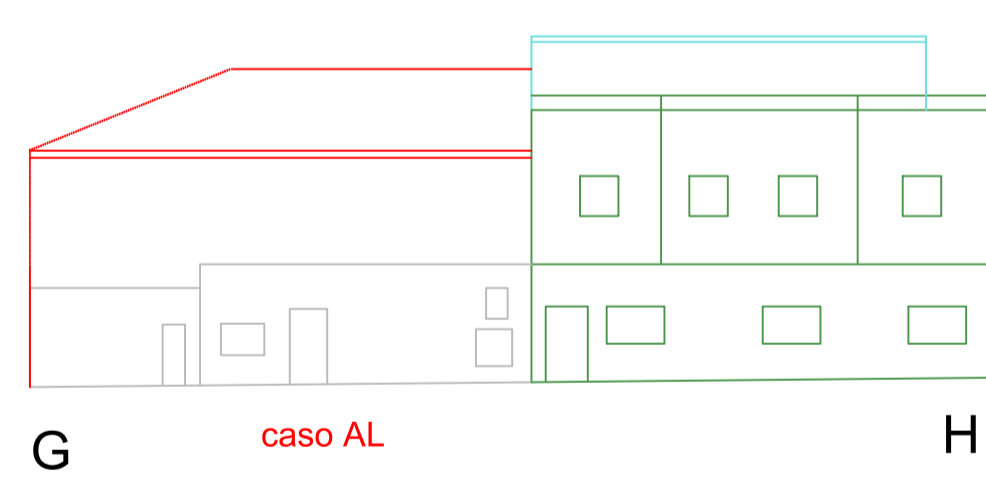
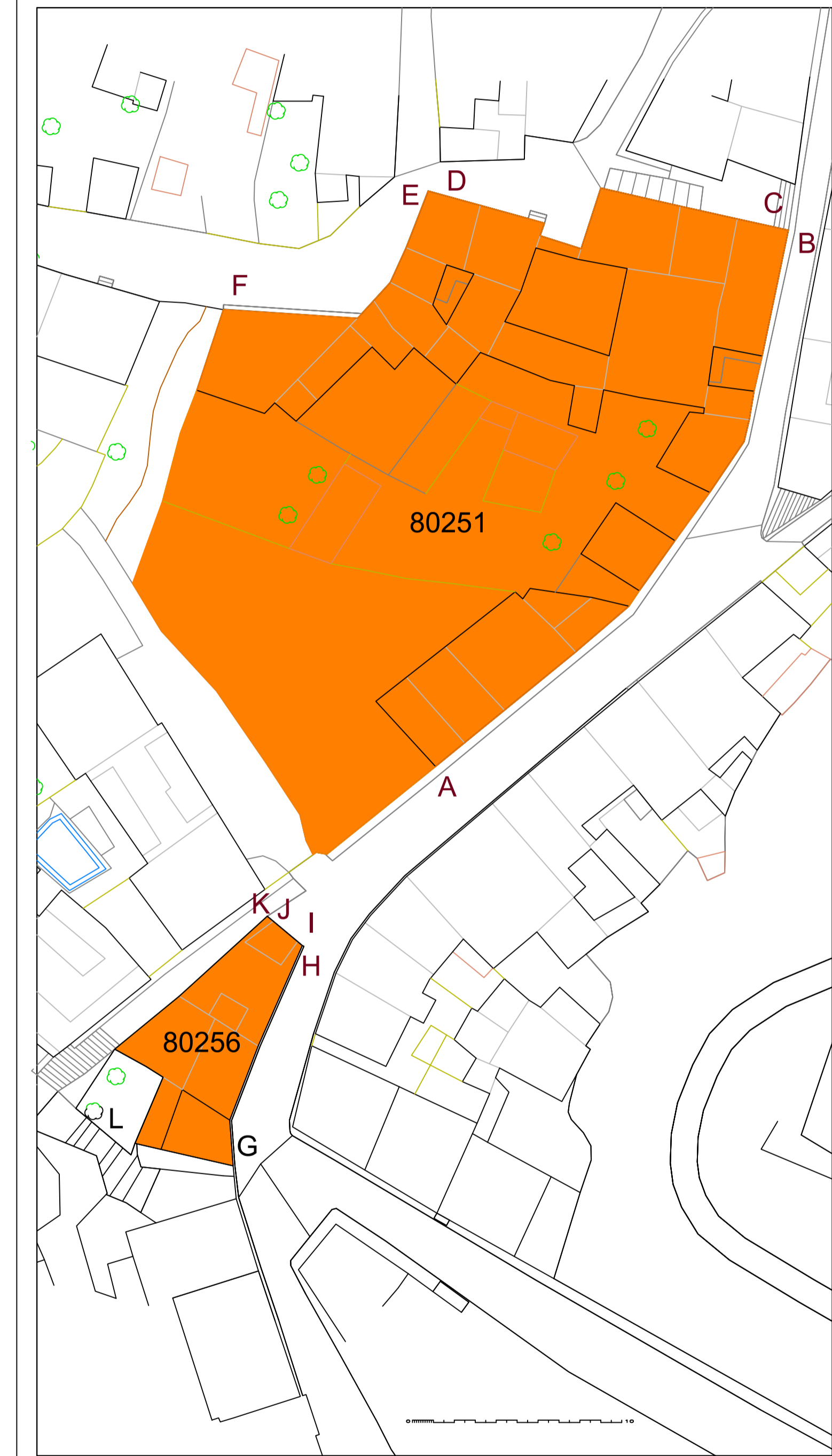
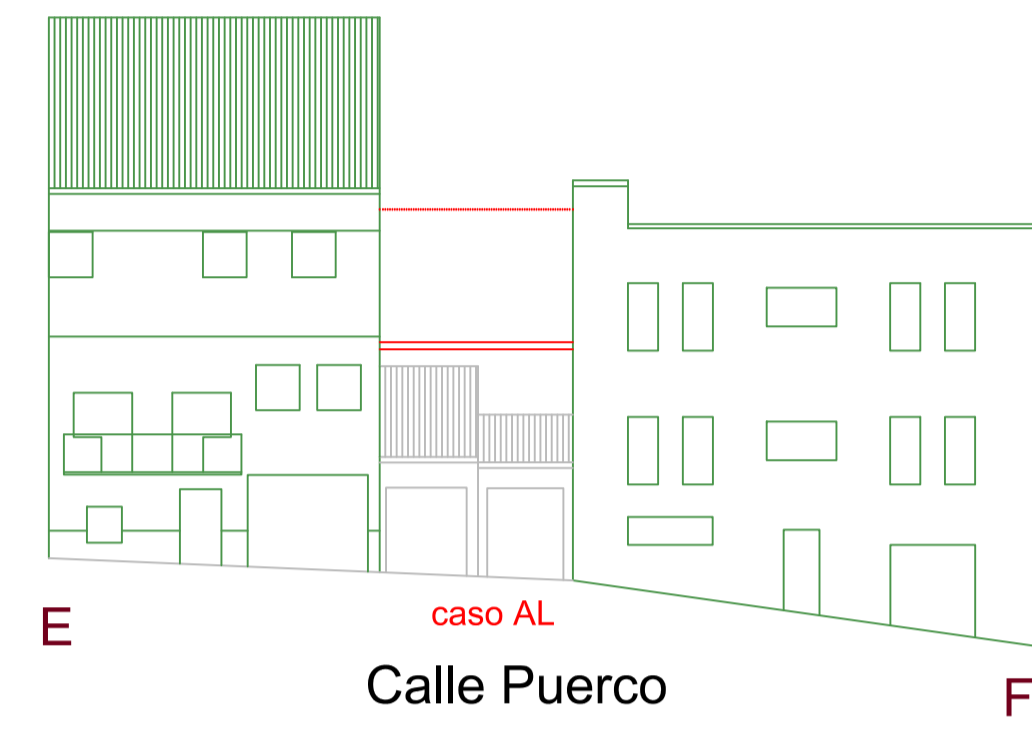
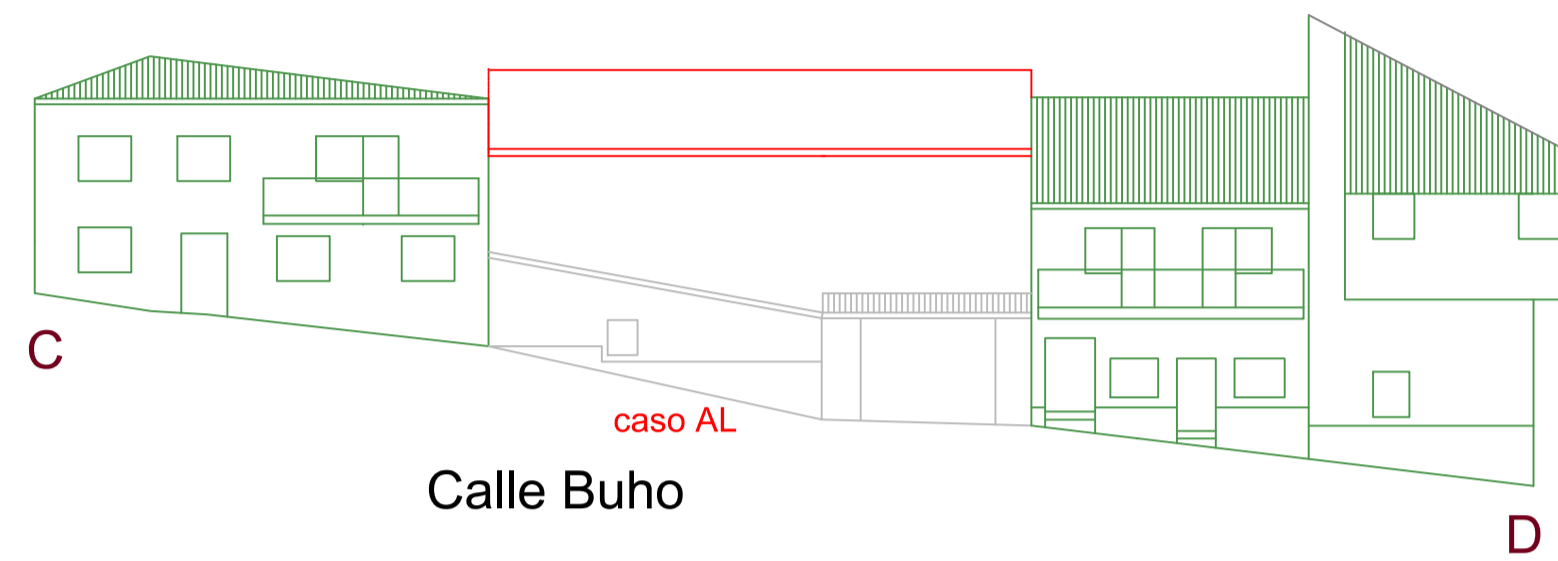
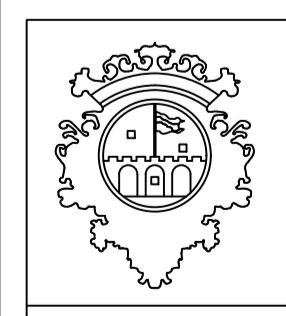


Manzana 80251



Calle Terrero

Manzana 80256

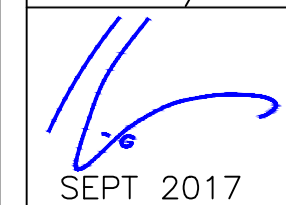


AYUNTAMIENTO DE ALBA DE TORMES
 MODIFICACIÓN N.º 1 DE LAS NN.UU.MM. Y DEL PEPCH
 PLANO DE INFORMACIÓN DE LAS NN.UU.MM. VIGENTES

PI.8.1

ALZADOS 80251 / 80256
 NÚCLEO DE ALBA DE TORMES (PCH.4.21NN.UU.MM.)
 ORDENACIÓN DETALLADA MANZANA CONJUNTO HISTÓRICO

ESCALA 1/200



JUAN CARLO/ GARCÍA FRAILE
 ARQUITECTO