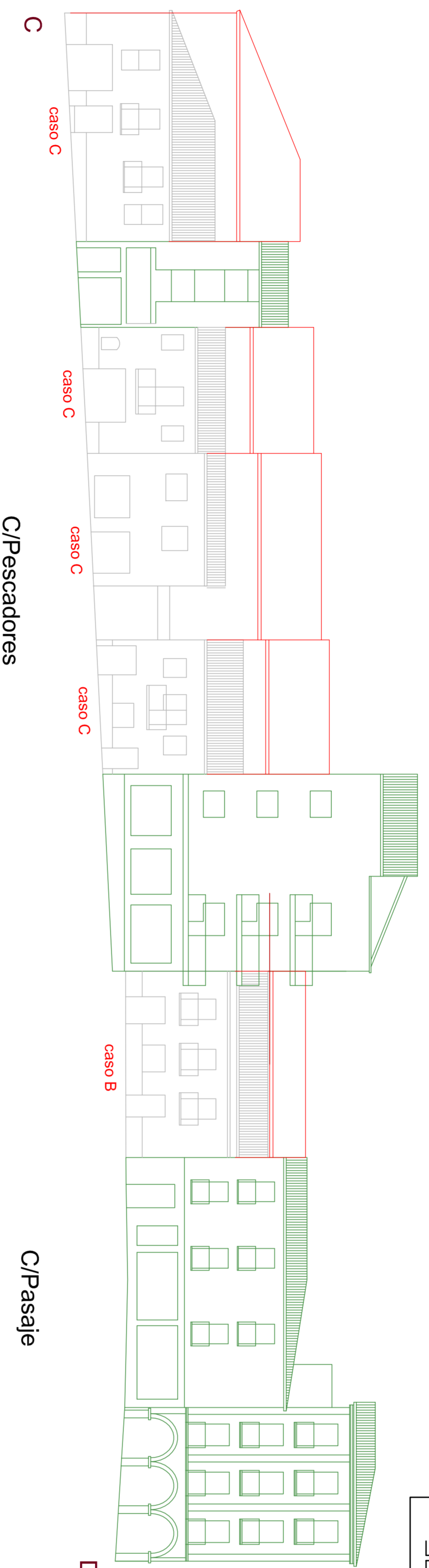
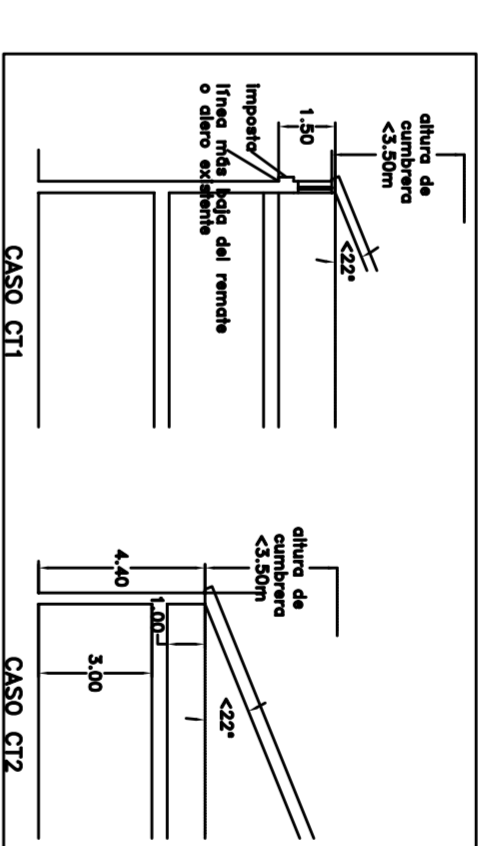
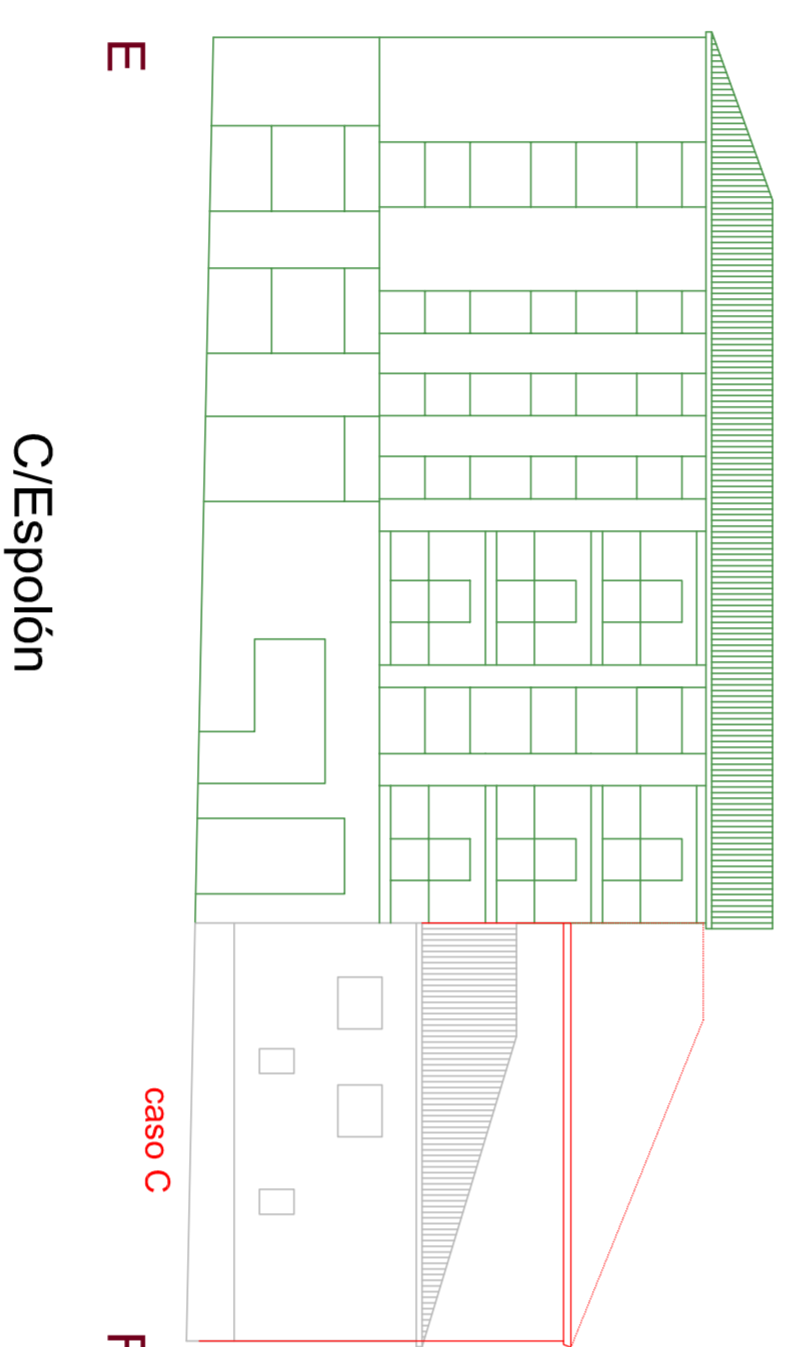


CASO A EDIF. CATALUÑADOS
 CASO B EDIF. RENOVADOS
 CASO C EDIF. RENOVABLES
 CASO D11 APLICACION DEL CASO



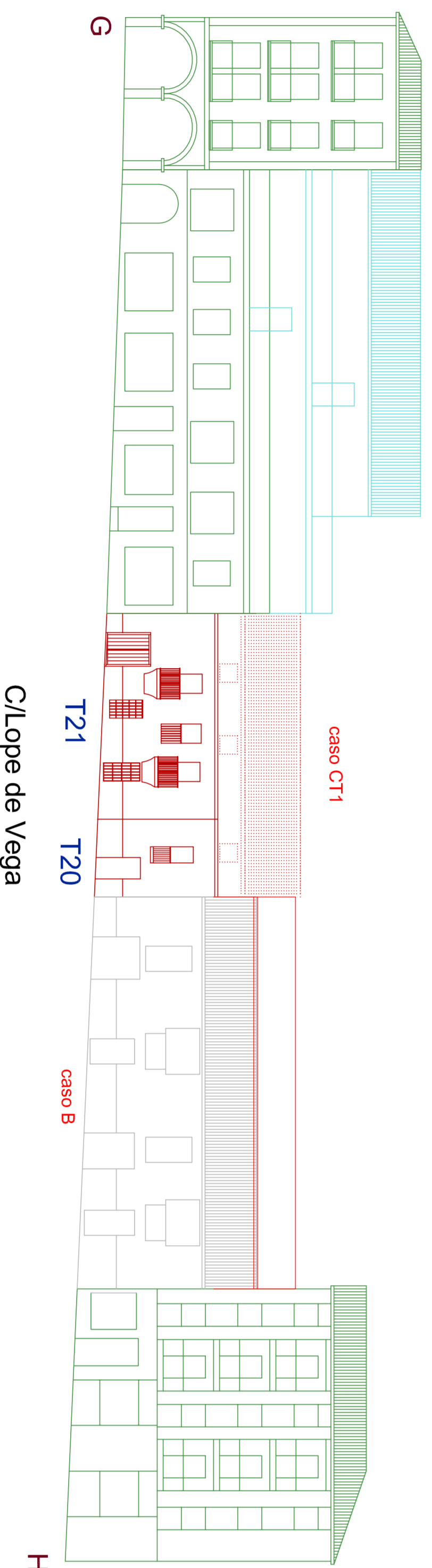
C/Pescadores

C/Pasaje

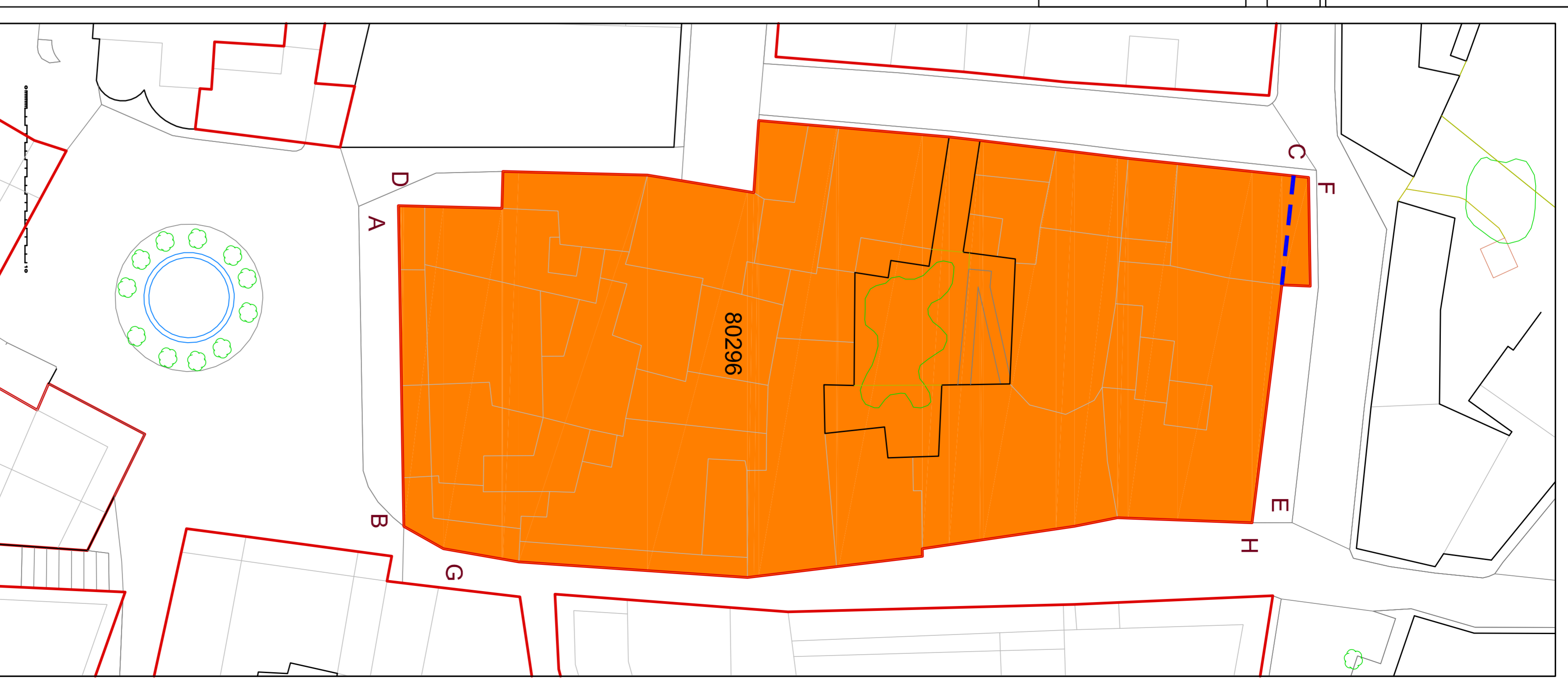


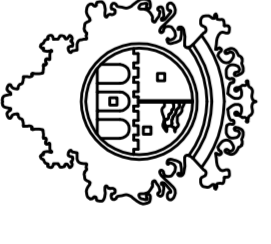
C/Espolón

Manzana 80296



C/Lope de Vega




AYUNTAMIENTO DE ALBA DE TORMES
 NORMAS URBANÍSTICAS MUNICIPALES
 ORDENACIÓN DETALLADA MANZANA CONJUNTO HISTÓRICO

PCH.4.14 ALZADOS 80296
 ESCALA 1/200


 JOSE CARLOS MÁRCOS ANGEL LEÓN
 arquitectos
 ENERO 2014
 CARLOS MÁRCOS OREJUDO, licenciado en bellas artes