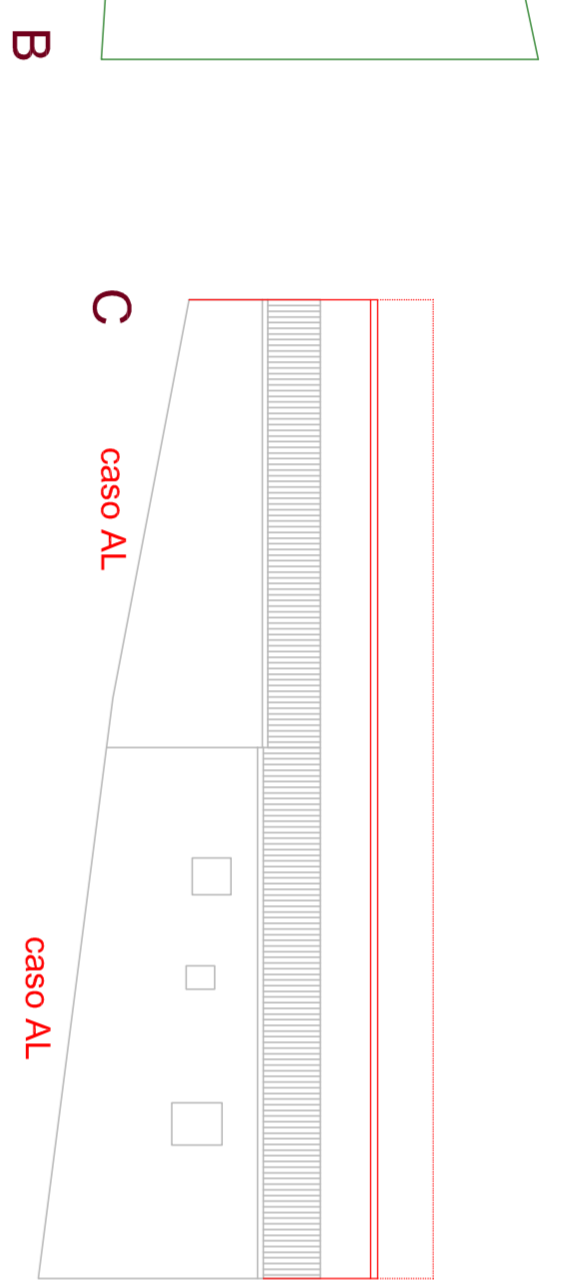
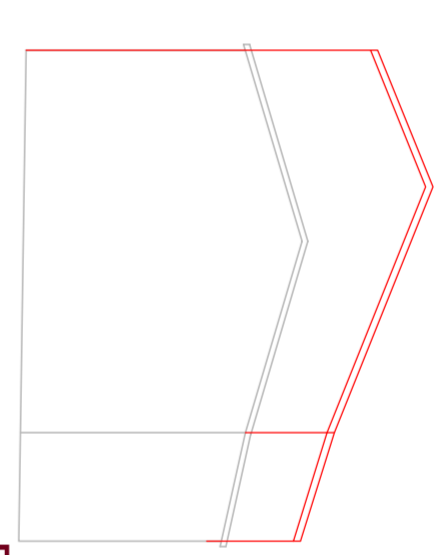


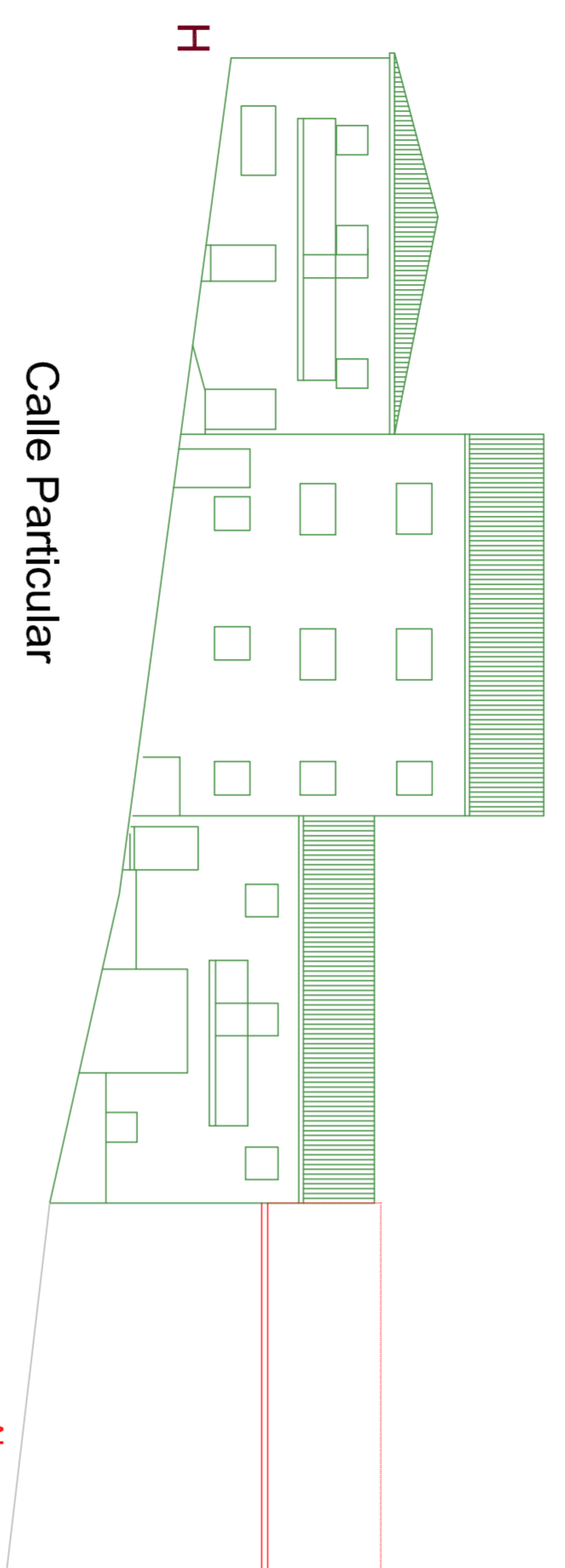
Calle del Puercio



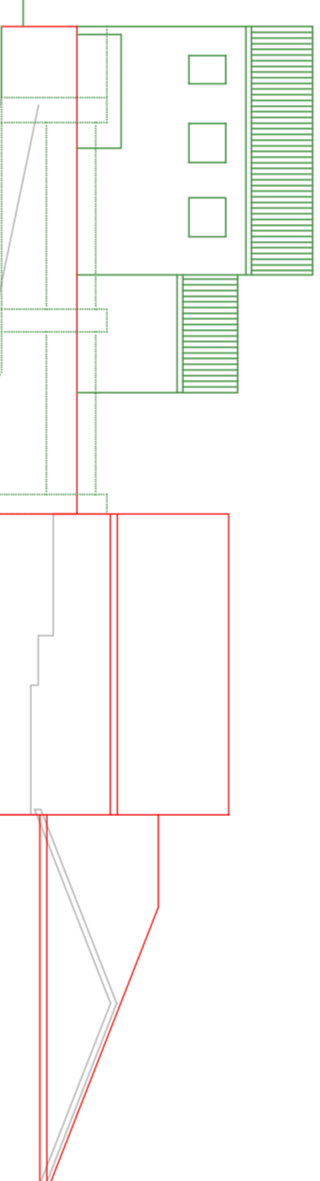
Calle del Puercio



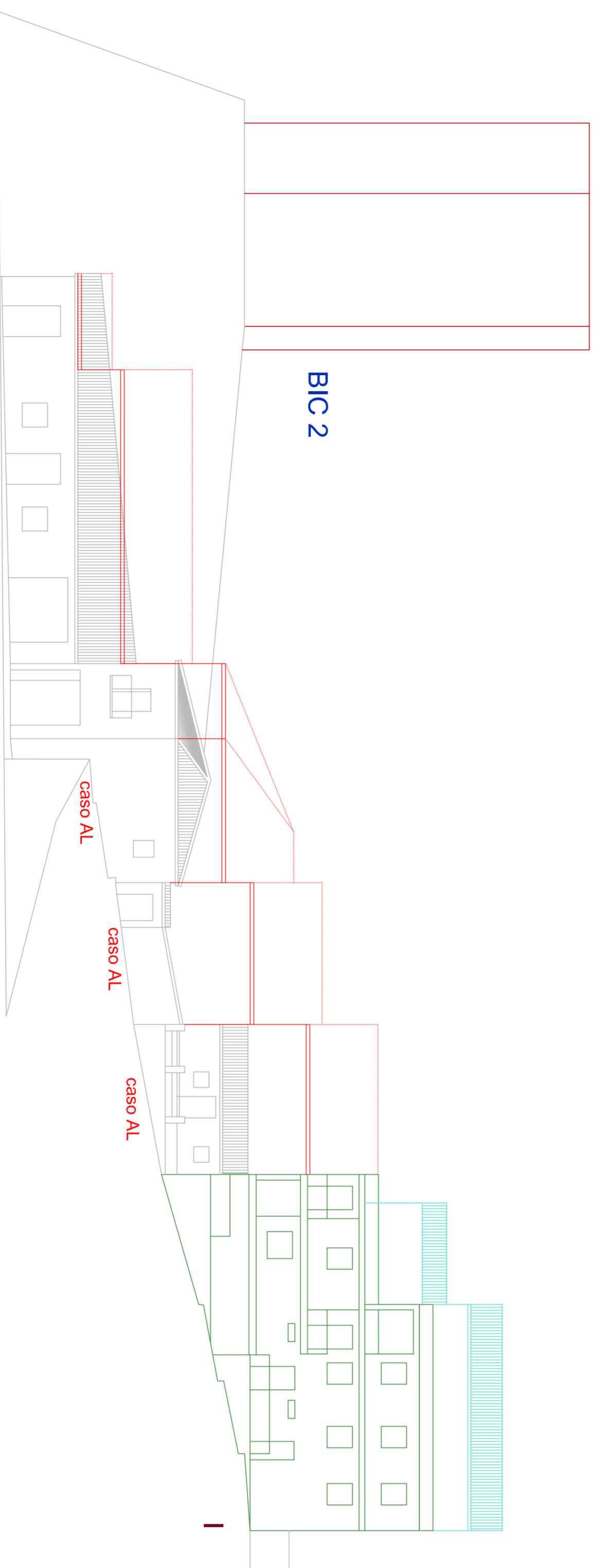
Calle Puerta Rio



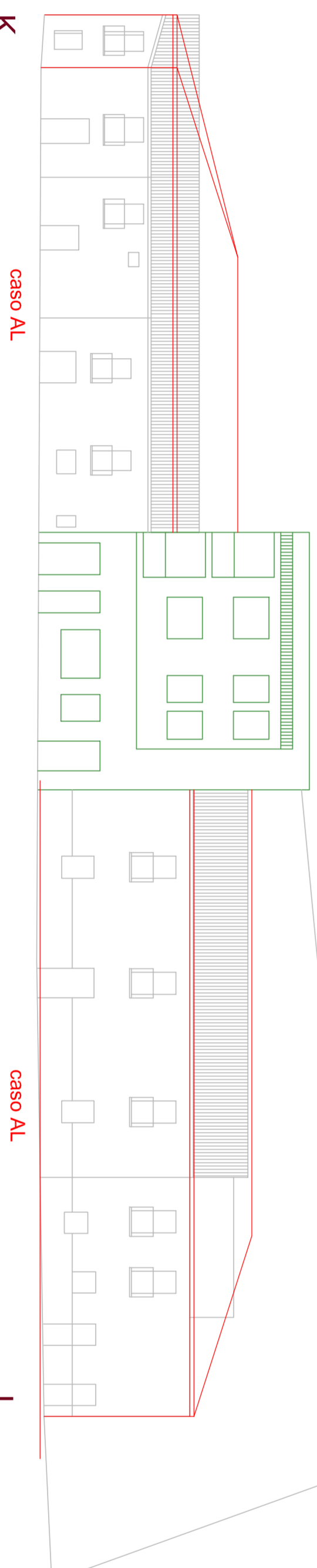
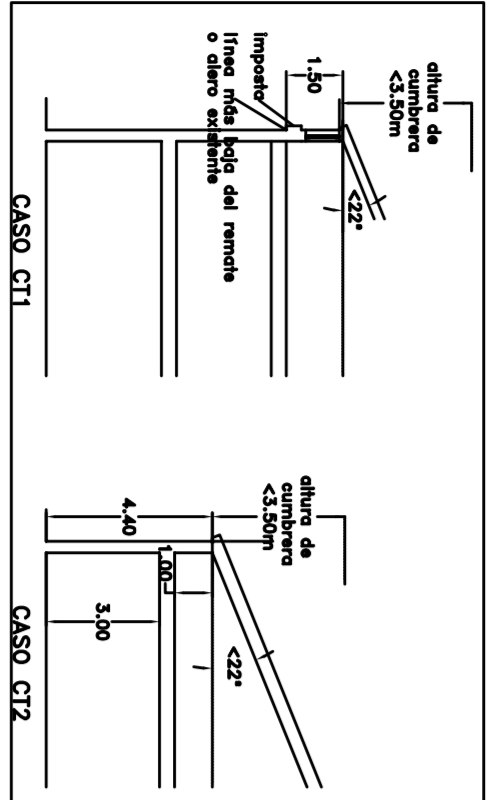
Calle Particular



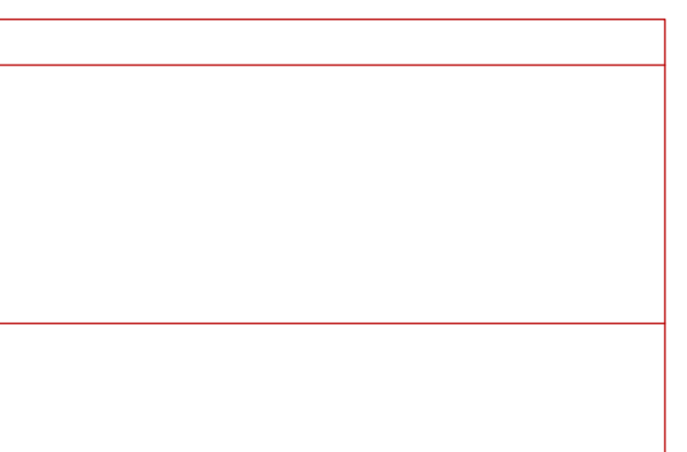
Calle Particular



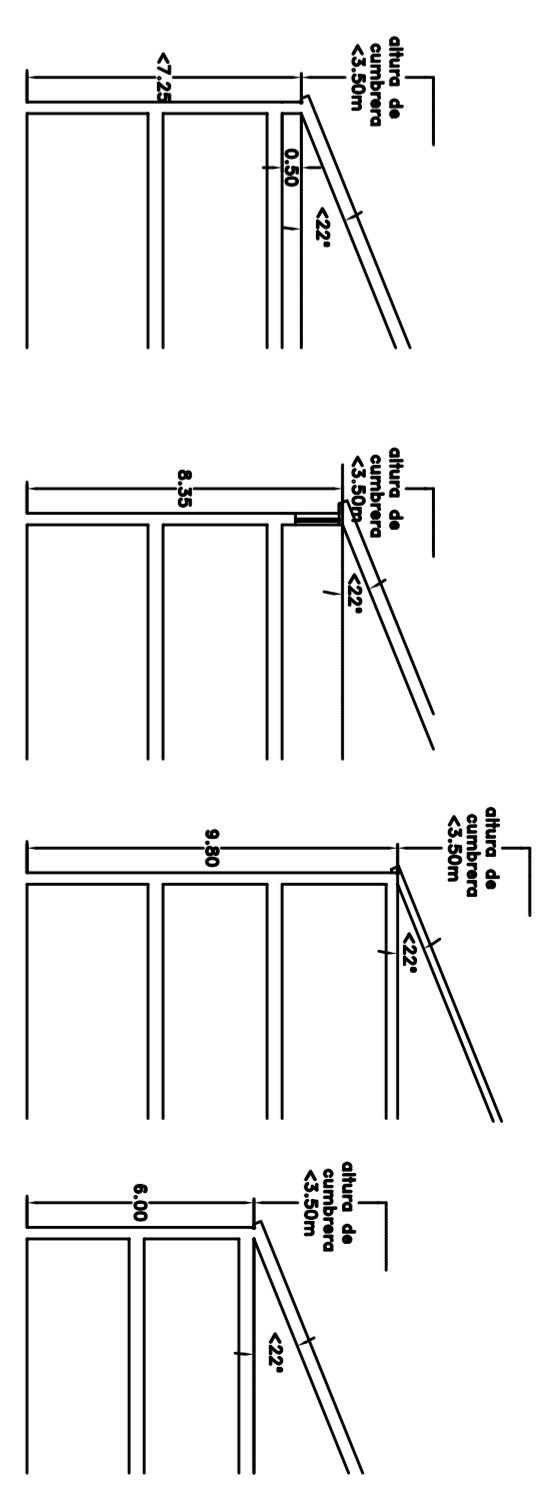
Subida al Torreón



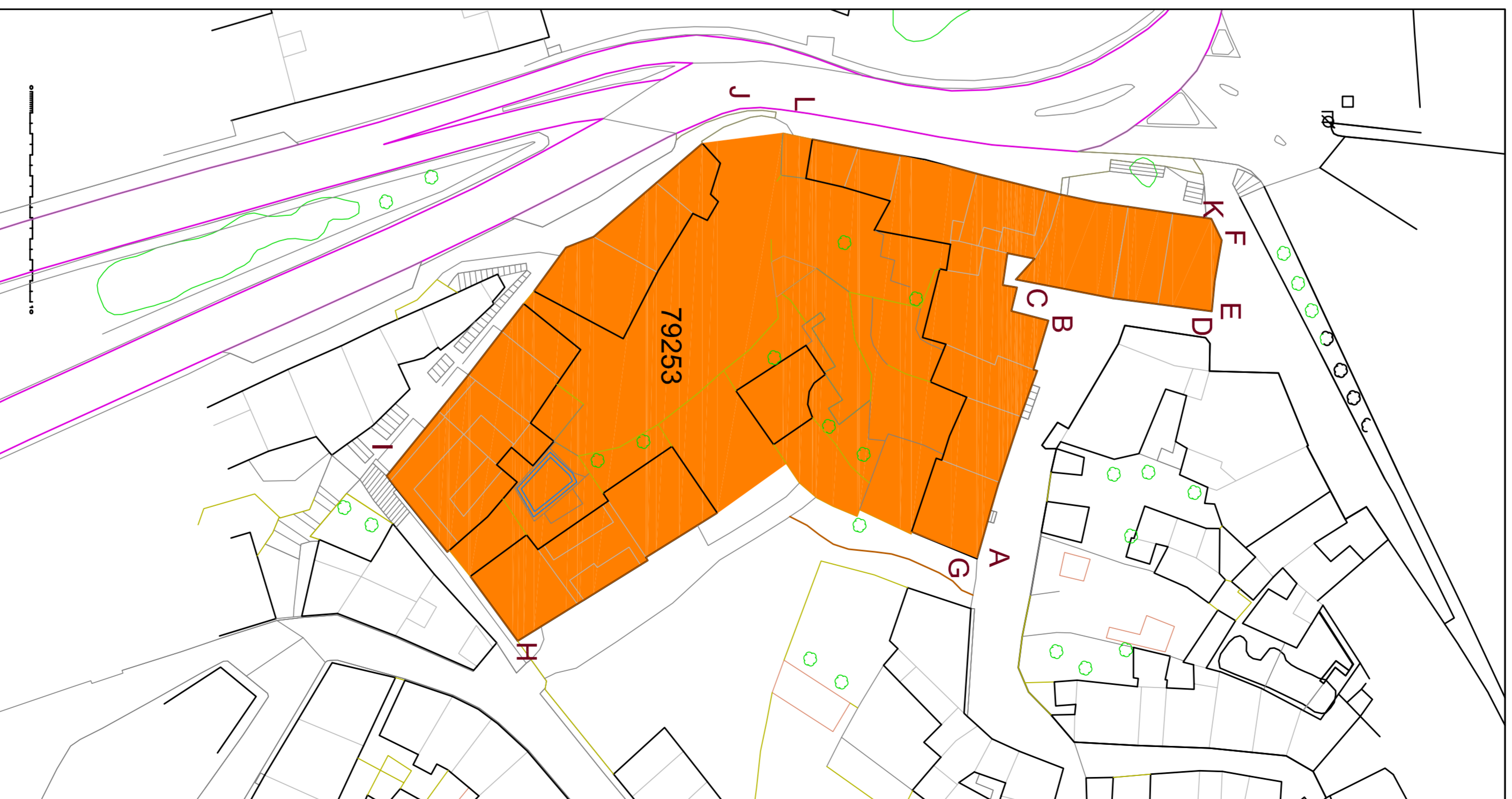
Calle Puerta Rio



BIC 2



CASO A: EBF. CATALOGADOS
 CASO B: EBF. RENOVADOS
 CASO C: EBF. RENOVABLES
 CASO AL: APLICACION DEL CASO



AYUNTAMIENTO DE ALBA DE TORMES
 NORMAS URBANÍSTICAS MUNICIPALES
 ORDENACION DETALLADA MANZANA CONJUNTO HISTÓRICO

PCH 4.05 ALZADOS 79253
 ESCALA 1/200

ARQUITECTOS
 JOSÉ CARLOS MÁRCOS ANGEL LEÓN
 CARLOS MÁRCOS ORCILLUO, licenciado en bellas artes
 arquitectos
 ENERO 2014